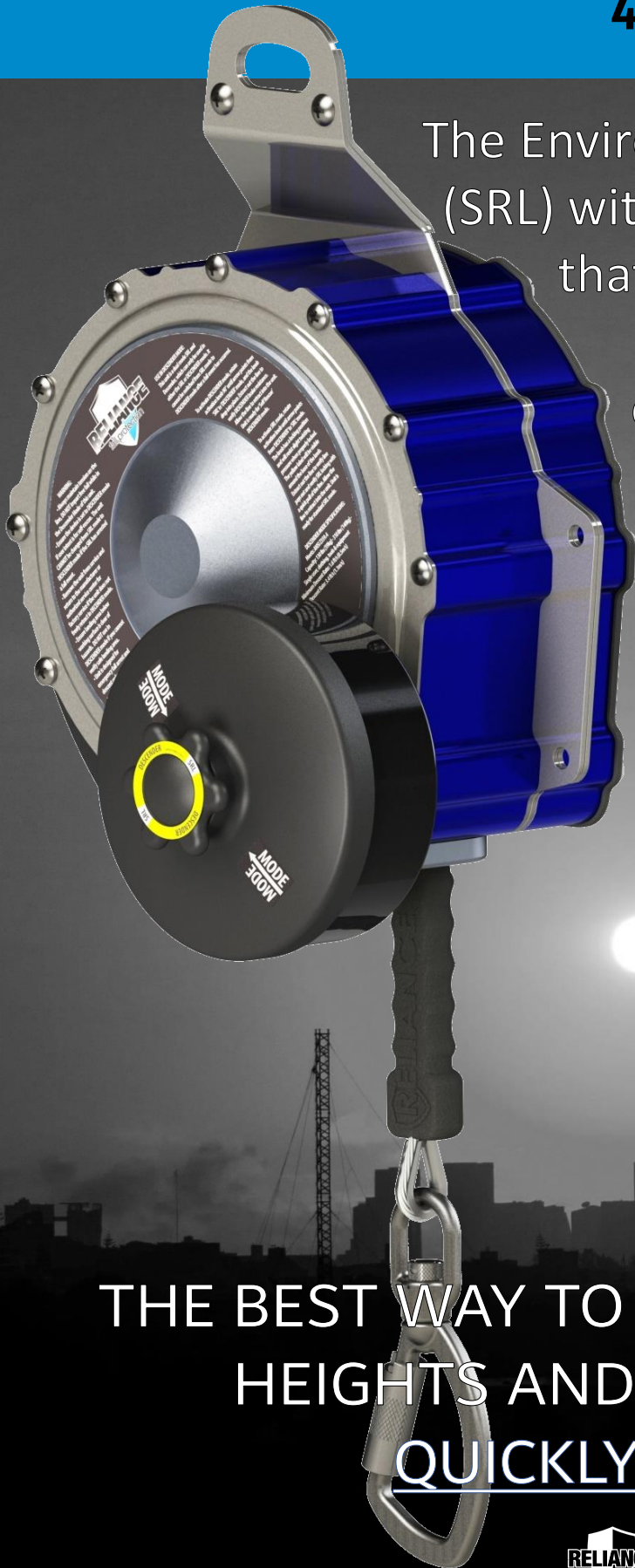


EnviroShield™

Self Retracting Lanyard with Descender
4130xxx Series



The Enviro-Shield™ Self Retracting Lifeline (SRL) with Descender is a dual use device that offers personnel the protection of an SRL with the addition of an emergency descent device when needed. The SRL operating and locking mechanism features IP69K environmental resistance and remains operational even when in descent mode. This means that no matter what environment or situation, your personnel are always protected.

THE BEST WAY TO PROTECT WORKERS AT
HEIGHTS AND GET THEM DOWN
QUICKLY AND SAFELY.



HIGHER STANDARDS IN PERSONAL FALL PROTECTION

EnviroShield™ Self Retracting Lifeline with Descender

The Enviro-Shield™ Self Retracting Lifeline with Descender features a cam-action pawl system ensuring positive lock-up even in the most demanding environments.

The SRL with Descender is a two mode unit operating in either SRL or Descender Modes.

- In SRL Mode, the unit functions as a standard SRL meeting ANSI Z359.14-12 Class B requirements.
- In Descender Mode, the unit automatically converts a fall into a controlled descent device offering self-rescue to the lowest working level. Even in Descender Mode, the SRL mechanism is still functioning in the background, unlike all of the competitive units on the market.

Note: The SRL cannot be converted from SRL to Descent Mode after a fall has occurred in SRL Mode.

This brochure contains only a general description of the products shown, it is not to be construed, in any manner, as a replacement for the product instructions. Under no circumstances shall the products be used by untrained or unqualified individuals and not until the product instructions and labels provided have been thoroughly read, understood and followed. Failure to follow instructions could result in serious injury or death.

EnviroShield™ SRL with Descender Part Numbers

Part #	Working Length	Weight	Line Type	Hook Type
4130050-1	50' 15m	57 lb. 26 kg	3/16" (4.5mm) Stainless Steel	Stainless Steel Swivel Carabiner
4130085-1	85' 26m	59 lb. 27 kg	3/16" (4.5mm) Stainless Steel	Stainless Steel Swivel Carabiner
4130130-1	130' 40M	81 lb. 37 kg	3/16" (4.5mm) Stainless Steel	Stainless Steel Swivel Carabiner

EnviroShield™ with Descender Performance Specifications:

SRL - ANSI Z359.14-2012, Class B:

Maximum Arrest Force (MAF): ≤ 1,800 lbs (8kN)

Average Arrest Force (AAF): ≤ 900 lbs (4kN)

Arrest Distance (AD): ≤ 42" (1.07m)

Capacity: 1 worker 130 lbs (59kg)-310 lbs (141kg) maximum combined tool & body weight.

Descender - ANSI Z359.4-2013:

Minimum Descent Rate: 1.6 ft/s (0.5m/s)

Maximum Descent Rate: 3.4 ft/s (1.1m/s)

Capacity: 1 worker 130 lbs (59kg)-310 lbs (141kg) maximum combined tool & body weight.



HIGHER STANDARDS IN PERSONAL FALL PROTECTION